



## Technical Service Information Bulletin

May 4, 2001

Title:

### REPLACEMENT VIN PLATES

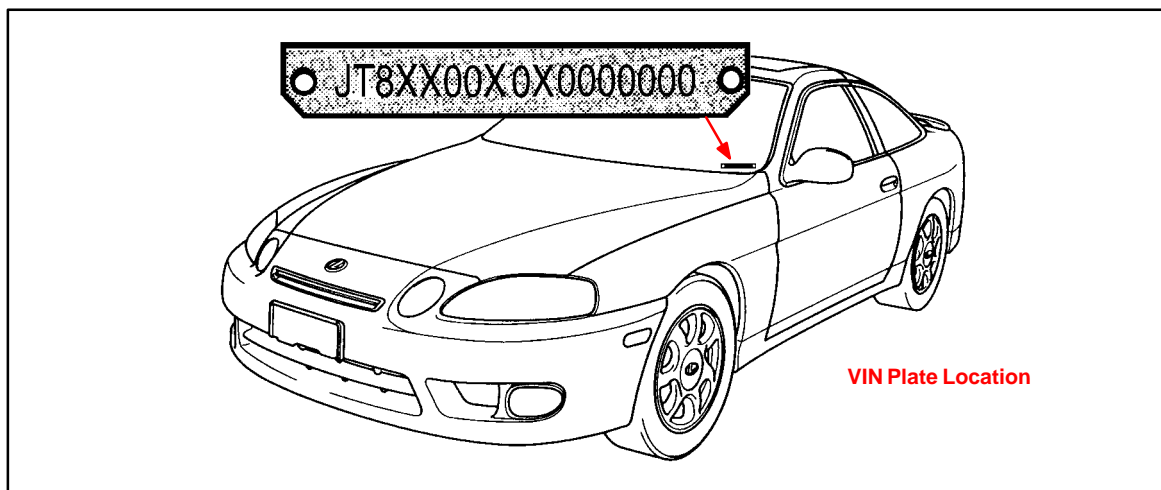
Models:

All Models

PG016-01

PRODUCT GENERAL INFORMATION

**Introduction** Replacement **VIN** plates (metal plates riveted to dashboard) **may be** available from Lexus providing the request meets the criteria listed below.



#### Applicable Vehicles

- All Lexus vehicles.

#### Replacement VIN Plate Criteria

- The vehicle is in an accident and the plate is damaged.

#### NOTE:

**The original plate to be replaced MUST accompany the request.**

#### NOTE:

If a plate is stolen, be sure to contact the State Police or your State's Department of Motor Vehicles (DMV). In most cases the State DMV will issue a unique number so that the original number can be included on stolen vehicle listings. If this is the case, a replacement plate is **NOT** available from Lexus. However, the original VIN, **NOT** the state issued VIN, must be used on all warranty claims.

#### Procurement Procedure

To request a replacement plate, complete a copy of the form on the back of this page. Note that the damaged VIN plate **MUST** accompany the request form. Your dealer parts account will be billed \$10.00 for each replacement of a damaged plate.

#### NOTE:

All replacement plates for damaged and/or stolen vehicles are subject to approval by the Technical Compliance Department. If you have any specific questions, contact (310) 468-3390.

#### Warranty Information

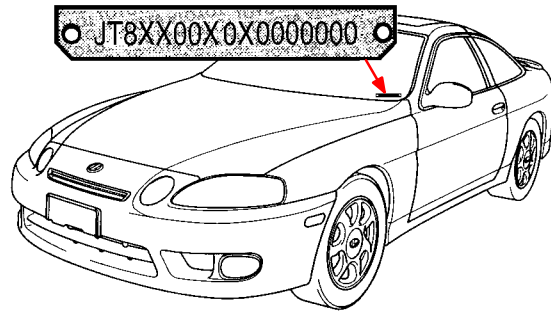
OP CODE	DESCRIPTION	TIME	OPN	T1	T2
N/A	Not Applicable to Warranty	—	—	—	—



Lexus Supports ASE Certification



## APPLICATION FOR REPLACEMENT VIN PLATE



### REASON FOR REPLACEMENT

☐ ACCIDENT DAMAGE

☐ OTHER \_\_\_\_\_

REASON/EXPLANATION

PLEASE PROVIDE CORRECT VIN \_\_\_\_\_



### DEALER INFORMATION

DEALER CODE:

DEALER NAME:

\_\_\_\_\_

ADDRESS:

STREET ADDRESS

CITY, STATE, ZIP CODE

TELEPHONE:

( )

AREA CODE, TELEPHONE NUMBER

CONTACT:

FIRST NAME, LAST NAME

**MAIL (DO NOT FAX) THE COMPLETED REQUEST FORM WITH THE OLD PLATE TO:**

TOYOTA MOTOR SALES, U.S.A. INC.  
TECHNICAL COMPLIANCE DEPARTMENT, S207  
19001 S. WESTERN AVENUE  
TORRANCE, CA. 90509-2991